

Wagons roll

If you're on the look-out for a forage wagon, then it's time to fill your boots as we give a run-through of what makes and models are available on the UK market. The information is all self-explanatory, with the DIN volume being the actual cubic capacity while typical volume relates to what a manufacturer reckons you can squeeze into the wagon's body

Claas Cargos							
Model	DIN volume	Typical volume	Price	Length	Height	Width	Weight
Cargos 8300	30.0m ³	60.0m ³	£73,670	8,595mm	3,650/3,810mm	N/A	8,500kg
Cargos 8400	35.5m ³	71.0m ³	£77,760	9,735mm	3,650/3,810mm	N/A	8,750kg
Cargos 8500	41.0m ³	82.0m ³	£81,300	10,875mm	3,650/3,810mm	N/A	9,000kg

Note: Capacity with 'medium compression'; height with 22.5in and 26.5in tyres.



Pick-up: Hydraulic-drive push configuration; 320mm x 2m wide; five straight tine rows; cam tine action; roller crop guard. Optional hydraulic suspension and central guide roller.
Intake: Gear-driven undershot rotor; 860mm x 1.58m; nine-row helix; 22mm tines in triple-tine segments.
Chopping: 40 double-sided knives; chop length from 38mm; hydraulic knife bank drop-down; spare knife set storage.
Loading control: Filling flap angle, intake rotor torque sensors; 'full' signal from tailgate locking mechanism sensor; optional auto stop by tailgate ultrasonic sensor.
Floor: 0.5m hydraulically adjustable drop-down section; 3mm galvanised steel with bolted galvanised rails; four chains with mechanical tension adjustment; single- or two-speed hydraulic drive.
Control: Claas Operator or any ISObus terminal, including Claas Communicator II.
Crop weighing: Available with hydraulic suspension axles; optional printer.
Running gear: Tandem or (8500 only) triple axles; leaf spring or hydraulic suspension; passive steering; 550/60-22.5in to 800/45 R26.5in tyres.
Additional features: Steel body has no cross bars, so suitable for top loading; filling flap pivots 90° forwards for top loading; removable intake assembly increases top-loading payload by 2.5t; on-board telematics data recording.



Krone AX							
Model	DIN volume	Typical volume	Price	Length	Height	Width	Weight
AX 250 GL	25.0m ³	N/A	£58,420	8,100mm	3,460mm	2,515mm	5,600kg
AX 280 GL	28.0m ³	N/A	£64,555	8,800mm	3,650mm	2,515mm	6,400kg
AX 310 GL	31.0m ³	N/A	£73,325	8,800mm	3,850mm	2,515mm	6,800kg



Pick-up: Chain drive; 1.8m wide, five straight tine rows, camless; 55mm tine spacing; roller crop guard. Optional rear guide wheels.
Intake: Chain-driven undershot rotor; 760mm x 1.55m; six-row helix; 25mm tines.
Chopping: 32 single-sided knives (16-knife configuration selectable); chop lengths 45mm or 90mm; hydraulic knife bank drop-down and swing-out.
Loading control: Front wall cross beam strain gauge and fork (AX 250 GL and AX 280 GL) or top flap (AX 310 GL) volume sensors; tailboard sensor auto stop.
Floor: Fixed front section inclined toward intake; timber floor; AX 250 GL two chains, AX 280 GL and AX 310 GL four chains; infinitely variable hydraulic drive.
Control: Krone CCI200 or any other ISObus terminal.
Crop weighing: Not available.
Running gear: Tandem axles – AX 250 GL rigid, AX 280 GL leaf-spring suspension, AX 310 GL leaf-spring or side slope compensating hydraulic suspension; passive steering; 500/50-17 to 620/40 R22.5 tyres.
Additional features: Steel body extensions fold down for storage.



Krone MX							
Model	DIN volume	Typical volume	Price	Length	Height	Width	Weight
MX 320 GL	31.0m ³	N/A	£81,300	9,550mm	3,875mm	2,550mm	7,300kg
MX 350 GL	35.0m ³	N/A	£92,800	9,550mm	3,875mm	2,550mm	8,200kg



Pick-up: Chain-driven push configuration; 1.9m wide; five straight tine rows, camless; 55mm tine spacing; roller crop guard. Optional rear guide wheels.
Intake: Gear-driven undershot rotor; 880mm x 1.64m; eight-row helix.
Chopping: 41 single-sided knives (20-, 21-knife configurations selectable); chop lengths from 41mm; hydraulic knife bank drop-down and swing-out.
Loading control: Front wall cross beam strain gauge and top flap volume sensors; tailboard sensor auto stop.
Floor: Fixed front section inclined toward intake; timber floor; four chains; infinitely variable hydraulic drive; twin hydraulic motors optional MX 320 GL, standard MX 350 GL.
Control: Krone CCI200 or any other ISOBus terminal.
Crop weighing: Optional with hydraulic drawbar and axle suspension – £2,025.
Running gear: Tandem axles with leaf-spring or side slope compensating hydraulic suspension (MX 320 GL £4,275; MX 350 GL standard); passive steering; 800/45 R26.5 tyres.
Additional features: Steel body has no cross bars so suitable for loading.

Krone ZX

Model	DIN volume	Typical volume	Price	Length	Height	Width	Weight
ZX 400 GL	38.0m ³	N/A	£112,610	9,750mm	3,990mm	2,950mm	10,300kg
ZX 450 GL	43.0m ³	N/A	POA	10,500mm	3,990mm	2,950mm	10,700kg
ZX 550 GL	53.0m ³	N/A	POA	12,000mm	3,990mm	2,950mm	12,300kg



Pick-up: Chain-driven push configuration; 2.1m wide; five straight tine rows, camless; 55mm tine spacing; roller crop guard. Optional rear guide wheels.
Intake: Gear-driven undershot rotor; 880mm x 1.84m; eight-row helix.
Chopping: 46 single-sided knives (23-knife configuration selectable); chop lengths from 37mm; hydraulic knife bank drop-down.
Loading control: Front wall cross beam strain gauge and top flap volume sensors; tailboard sensor auto stop.
Floor: Fixed front section inclined toward intake; timber floor; four flat link chains; infinitely variable twin hydraulic motor drive.
Control: Krone CCI200 or any other ISOBus terminal.
Crop weighing: Optional with hydraulic drawbar and axle suspension.
Running gear: Tandem axles with side slope compensating hydraulic suspension; passive or active steering; 620/40 R22.5 to 710/45 R22.5 tyres.
Additional features: Steel body has no cross bars, so suitable for top loading; front flap folds forward 90° for top loading.

Kverneland 100 R

Model	DIN volume	Typical volume	Price	Length	Height	Width	Weight
10040 R	23.1m ³	40.0m ³	£47,048	8,130mm	3,230mm	2,550mm	5,950kg
10045 R	29.3m ³	45.0m ³	£55,617	8,820mm	3,680mm	2,550mm	6,700kg
10055 R	35.6m ³	55.0m ³	£68,204	9,500mm	3,930mm	2,550mm	7,300kg



Pick-up: Chain-driven push configuration; 1.95m wide; six chevron-shaped tine rows; camless; 55mm tine spacing; roller crop guard.
Intake: Gear-driven undershot rotor; 800mm x 1.42m; nine-row chevron; 20mm tines in bolted three-tine segments.
Chopping: 35 single-sided knives; chop lengths from 40mm; hydraulic knife bank drop-down.
Loading control: Optional mechanical sensor.
Floor: Level timber floor; four chains in steel-lined channels; central gearbox split mechanical drive.
Control: Kverneland ISOBus Tellus GO or Tellus or any other ISOBus terminal.
Crop weighing: Not available.
Running gear: Tandem axles with parabolic suspension; active steering on 10045 R and 10055 R; 500/50-17 to 750/45 R26.5 or 800/45-26.5 tyres.

Kverneland 110 C

Model	DIN volume	Typical volume	Price	Length	Height	Width	Weight
11070 C	36.4m ³	70.0m ³	£99,786	9,020mm	3,990mm	2,820mm	9,050kg
11080 C	41.7m ³	80.0m ³	£103,166	10,020mm	3,990mm	2,820mm	9,680kg



Pick-up: Chain-driven push configuration; 1.95m wide; six chevron-shaped tine rows; camless; 55mm tine spacing; roller crop guard.
Intake: Gear-driven undershot rotor; 800mm x 1.58m; seven-row chevron; 20mm tines in bolted three-tine segments.
Chopping: 40 single-sided knives; chop lengths from 38mm; hydraulic knife bank drop-down.
Loading control: Optional mechanical sensor.
Floor: Level timber floor; four chains in steel-lined channels; central gearbox split mechanical drive.
Control: Kverneland ISOBus Tellus GO or Tellus or any other ISOBus terminal.
Crop weighing: Not available.
Running gear: Tandem axles with parabolic suspension; active steering on 10045 R and 10055 R; 500/50-17 to 750/45 R26.5 or 800/45-26.5 tyres.

profi Silage wagon guide

Lely Tigo MR/R

Model	DIN volume	Typical volume	Price	Length	Height	Width	Weight
MR 40	26.0m ³	40.0m ³	£50,995	8,130mm	3,000mm	2,500mm	4,400kg
45 R Profi	30.0m ³	50.0m ³	£58,475	8,800mm	3,850mm	2,450mm	5,480kg
MR 50	30.0m ³	50.0m ³	£53,995	8,800mm	3,000mm	2,500mm	5,370kg
MR 50 Profi	30.0m ³	50.0m ³	£55,395	8,130mm	3,000mm	2,500mm	5,400kg
MR 60 Profi	35.0m ³	60.0m ³	£57,820	8,800mm	3,000mm	2,500mm	6,370kg



Pick-up: Chain-driven push configuration; 1.8m wide; 45 R Profi – seven, MR models five straight tine rows; camless; 54mm tine spacing; roller crop guard. Optional guide roller.

Intake: Gear-driven undershot rotor; 45 R Profi seven-row helix, MR models five-row helix; 25mm tines.

Chopping: 45 R Profi 40, MR models 31 single-sided knives (20 knives selectable); chop lengths 45 R Profi 37mm, MR models 45mm or 90mm; hydraulic knife bank drop-down, manual swing-out.

Loading control: MR – optional mechanical sensing mechanism; MR Profi – bulkhead position and bulkhead hydraulics load sensors; tailgate sensor 'full' signal.

Floor: Level timber floor; two 10mm, 12.5t breaking strain chains in steel lined slots (four chains optional); two-speed hydraulic drive.

Control: MR – electro-magnetic control box; MR Profi – any ISObus terminal. **Crop weighing:** Not available.

Running gear: Tandem axles with leaf spring suspension; 22.5in or 26.5in tyres.

Additional features: MR Profi – hydraulic bulkhead for max capacity, density control and unloading assistance.

Lely Tigo PR/XR

Model	DIN volume	Typical volume	Price	Length	Height	Width	Weight
PR 45	31.0m ³	45.0m ³	£62,725	7,750mm	3,850mm	2,520mm	6,650kg
PR 50	31.0m ³	50.0m ³	£69,250	7,750mm	3,920mm	2,520mm	7,100kg
PR 60	36.0m ³	60.0m ³	£73,750	8,750mm	3,920mm	2,520mm	7,600kg
XR 65	38.0m ³	65.0m ³	£81,995	8,750mm	3,920mm	2,550mm	9,200kg
PR 70	41.0m ³	70.0m ³	£79,200	9,750mm	3,920mm	2,520mm	8,100kg
XR 75	44.0m ³	75.0m ³	£98,750	9,750mm	4,000mm	2,550mm	10,200kg



Pick-up: Chain-driven push configuration; PR 1.9m wide, XR 2m wide; seven straight tine rows; camless; 54mm tine spacing; roller crop guard. Optional hydraulic suspension, guide roller.

Intake: Gear-driven undershot rotor; PR 800mm x 1.63m, XR 800mm x 1.81m; seven-row helix; 25mm tines in three segments. **Chopping:** 45 single-sided knives (20 knives selectable); chop lengths 37mm; hydraulic knife bank drop-down, manual swing-out.

Loading control: Bulkhead position and bulkhead hydraulics load sensors; tailgate sensor 'full' signal.

Floor: Inclined front section; galvanised steel floor; four chains on bolted steel rails; PR – single-speed hydraulic drive, two-speed option; XR – two-speed hydraulic drive. **Control:** Lely Control Unit or any ISObus terminal.

Crop weighing: PR 45 + PR 50 not available; optional on all others.

Running gear: PR 45 to XR 65 tandem axles; leaf spring suspension, PR 60 to XR 65 hydro-pneumatic self-levelling optional, XR 75 standard; 22.5in or 26.5in tyres.

Additional features: Hydraulic bulkhead for maximum capacity, density control and unloading assistance.

Malone MT

Model	DIN volume	Typical volume	Price	Length	Height	Width	Weight
MT 35	20.0m ³	35.0m ³	£45,000	7,360mm	3,900mm	2,550mm	7,200kg
MT 42	25.0m ³	42.0m ³	£50,000	7,870mm	3,950mm	2,550mm	7,500kg
MT 52	30.0m ³	52.0m ³	£75,000	8,700mm	3,950mm	2,550mm	8,000kg



Pick-up: Chain-driven push configuration; 560mm x 2m wide; five straight tine rows; cam track; 55mm tine spacing; roller crop guard.

Intake: Chain-driven undershot rotor; 880mm x 1.46m; seven-row helix.

Chopping: 35 single-sided knives; chop length 40mm; hydraulic knife bank drop-down.

Loading control: Manual or automatic using sensor on top canopy; auto 'full' floor stop and signals.

Floor: Level timber floor; four chains in steel-lined channels; single-speed hydraulic drive.

Control: Malone electro-hydraulic.

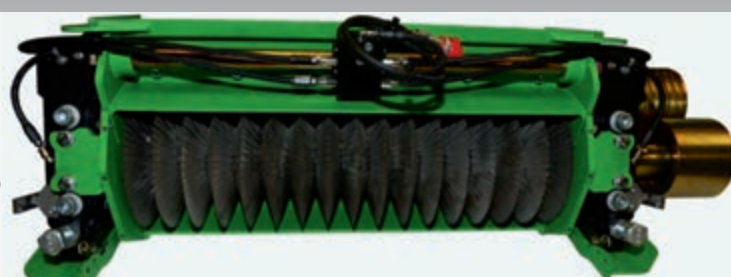
Crop weighing: Not available. **Running gear:** Tandem axles; leaf-spring suspension; MT52 – passive rear axle steering; 560/45 R22.5 or 600/50 R22.5 tyres.

LACOTEC
GmbH

Rodland 19
D 51580 Reichshof -
Erdingen

www.lacotec.de
+49 2297-908820
info@lacotec.de

Extreme -
processing



SHARKCUT DiscCracker for Claas SPFH

Best silage quality for biogas plants and dairy farms

Processes maximum cutting length

Excellent material flow

Robust and solid construction

100% cracked kernels and shredded material

Long lifetime

Performance enhancing *

One Cracker for all Cutting Length

* In direct comparison to a standard rolling crackers, with the same fodder processing, without prejudice!



Pöttinger Faro							
Model	DIN volume	Typical volume	Price	Length	Height	Width	Weight
3510 L	24.0m ³	35.0m ³	£46,784	7,780mm	3,560mm	2,420mm	5,550kg
4010 L	27.0m ³	40.0m ³	£48,827	8,460mm	3,560mm	2,420mm	5,650kg
4010 L Combiline	23.0m ³	42.0m ³	£53,795	8,400mm	3,350mm	2,510mm	6,350kg
4510 L	30.0m ³	45.0m ³	£51,668	9,140mm	3,560mm	2,420mm	5,800kg
5010 L	33.0m ³	45.0m ³	£53,744	9,140mm	3,560mm	2,420mm	5,850kg



Pick-up: Chain-driven push configuration; 1.85m wide; six straight tine rows; cam tracks; roller crop guard. Optional hydraulic suspension, parallelogram-mounted gauge roller.

Intake: Chain-driven undershot rotor; 750mm x 1.45m; seven row helix.

Chopping: 31 single-sided knives; chop length 45mm; hydraulic knife bank drop-down, manual swing-out.

Loading control: Pressure sensor low on front panel plus upper flap sensor.

Floor: Inclined front section timber floor; four chains in steel-lined channels; single- or two-speed hydraulic drive.

Control: Pöttinger Direct Control, CCI-Terminal, Power Control Wireless or any other ISOBus terminal.

Crop weighing: Not available.

Running gear: Tandem axles; leaf-spring, parabolic or hydro-pneumatic suspension; optional steering rear axle; 500/50-17 or up to 710/35 R22.5in tyres.

Additional features: Combiline has self-supporting structure with no cross-members and fold-down front flap for top loading.

Pöttinger Europrofi							
Model	DIN volume	Typical volume	Price	Length	Height	Width	Weight
4510 L Combiline	26.0m ³	45.0m ³	£59,922	8,440mm	3,650mm	2,510mm	6,650kg
5010 L Combiline	29.0m ³	50.0m ³	£65,636	9,120mm	3,650mm	2,670mm	7,150kg
5510 L Combiline	32.0m ³	55.0m ³	£70,022	9,800mm	3,650mm	2,670mm	7,650kg



Discover the new profi Tablet edition

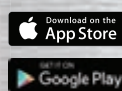
profi

Tablet subscription

- Packed with exciting new features
- Special photo galleries, and videos
- Interactive graphics and extra info
- For iPad and Android tablets
- 11 issues per year: £54.99 / €74.99

Try it for free!

Download the profi Tablet App from the App Store or Google Play free of charge and enjoy your free trial copy. Search for 'profi the professional farm machinery magazine' and look for the logo:



profi
Tablet-Video
www.profi.com/Tablet



Special offer for existing print subscribers

Just £5.50 / €6.60 to add to your existing subscription
Contact us now to upgrade

HAVE ANY QUESTIONS? Please call us: +44 (0) 1323 441 823 or email: info@profi.com



Pick-up: Chain-driven push configuration; 1.85m wide; six straight tine rows; cam tracks; roller crop guard. Optional hydraulic suspension, parallelogram-mounted gauge roller.
Intake: Gear-driven undershot rotor; 800mm x 1.45m; eight row helix.
Chopping: 35 single- or double-sided knives; chop length 39mm; hydraulic knife bank drop-down, manual swing-out.
Loading control: Pressure sensor low on front panel plus upper flap sensor.
Floor: Inclined front section timber floor; four chains in steel-lined channels; single- or two-speed hydraulic drive.
Control: Pöttinger Direct Control, CCI-Terminal, Power Control Wireless or any other ISObus terminal.
Crop weighing: Not available.
Running gear: Tandem axles; leaf-spring, parabolic or hydro-pneumatic suspension; optional steering rear axle; 22.5in tyres.
Additional features: Combiline has self-supporting body structure with no cross-members for top loading.

Pöttinger Torro

Model	DIN volume	Typical volume	Price	Length	Height	Width	Weight
6010 L Combiline	31.5m ³	60.0m ³	£79,695	9,120mm	3,650mm	2,550mm	8,300kg
6510 L Combiline	35.0m ³	65.0m ³	£81,868	9,800mm	3,650mm	2,550mm	8,650kg



Pick-up: Chain-drive push configuration; 2m wide; six straight tine rows; cam tracks; roller crop guard. Optional hydraulic suspension, parallelogram-mounted gauge roller.
Intake: Gear-driven undershot rotor; 800mm x 1.63m; eight row helix.
Chopping: 45 single- or double-sided knives; chop length 34mm; hydraulic knife bank drop-down, manual swing-out.
Loading control: Pressure sensor low on front panel plus upper flap sensor.
Floor: Inclined front section timber floor; four chains in steel-lined channels; single- or two-speed hydraulic drive.
Control: Pöttinger Direct Control, CCI-Terminal, Power Control Wireless or any other ISObus terminal.
Crop weighing: Not available.
Running gear: Tandem axles; leaf-spring, parabolic or hydro-pneumatic suspension; standard steering rear axle; 22.5in tyres.
Additional features: Optional Autocut on-board knife sharpening. Self-supporting body structure with no cross-members for top loading.

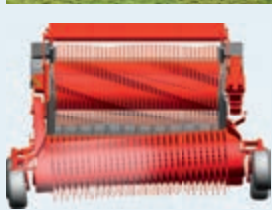


Pöttinger Jumbo

Model	DIN volume	Typical volume	Price	Length	Height	Width	Weight
6610 L	39.0m ³	66.0m ³	£85,803	9,930mm	3,980mm	2,550mm	8,750kg
6610 L Combiline	37.9m ³	66.0m ³	£92,204	9,930mm	3,830mm	2,920mm	9,150kg
7210 L	42.5m ³	72.0m ³	£86,755	10,600mm	3,980mm	2,550mm	9,000kg
7210 L Combiline	41.5m ³	72.0m ³	£105,216	10,610mm	3,865mm	2,970mm	10,600kg
8010 L	46.5m ³	80.0m ³	£90,228	11,390mm	3,980mm	2,550mm	9,250kg
10010 L	49.4m ³	100.0m ³	£127,995	11,900mm	3,980mm	2,550mm	11,750kg
10010 L Combiline	46.6m ³	100.0m ³	£129,279	11,860mm	3,795mm	2,820mm	11,950kg



Pick-up: Chain-driven push configuration; 2m wide; eight straight tine rows; cam tracks; roller crop guard; side gathering augers. Optional hydraulic suspension, parallelogram-mounted gauge roller, 2.40m wide pick-up.
Intake: Gear-driven undershot rotor; 800mm x 1.63m; eight row helix.
Chopping: 45 single- or double-sided knives; chop length 34mm; hydraulic knife bank drop-down, manual swing-out.
Loading control: Pressure sensor low on front panel plus upper flap sensor.
Floor: Inclined front section timber floor; 6610 L to 8010 L four chains, 10010 L six chains in steel-lined channels; single- or two-speed hydraulic drive.
Control: Pöttinger Direct Control, CCI-Terminal, Power Control Wireless or any other ISObus terminal.
Crop weighing: Optional with hydro-pneumatic suspension.
Running gear: 6610 L – tandem axles, 7210 L + 8010 L – optional triple axles; leaf-spring, parabolic or hydro-pneumatic suspension (standard on 10010 L); passive steering rear axle, active steering on 10010 L; 22.5in or 26.5in tyres.
Additional features: Optional Autocut on-board knife sharpening. Combiline models have self-supporting body structure with no cross-members for top loading.



Schuitemaker Rapide

Model	DIN volume	Typical volume	Price	Length	Height	Width	Weight
55 S	27.0/31.0m ³	N/A	£52,000	7,950mm	3,770mm	2,500mm	6,200kg
65 S	32.0/37.0m ³	N/A	£55,000	8,950mm	3,770mm	2,500mm	6,700kg
520 S	34.0/37.0m ³	N/A	£63,500	8,070mm	3,820mm	2,860mm	8,080kg
580 S	38.0/41.0m ³	N/A	£70,000	8,580mm	3,820mm	2,560mm	8,700kg
660 S	42.0/49.0m ³	N/A	£79,500	9,340mm	4,000mm	2,910mm	9,760kg
6600 S	42.0/49.0m ³	N/A	£88,600	9,460mm	4,000mm	2,910mm	10,720kg
7800 S	49.0/56.0m ³	N/A	£106,700	10,070mm	4,000mm	2,990mm	12,840kg
8400 S	53.0/61.0m ³	N/A	£109,800	11,260mm	4,000mm	2,990mm	13,300kg



Pick-up: Chain-drive trailing configuration; 10-series 1.8m wide, 100- + 1000-series 2m wide; tandem gauge wheels.
Intake: Gear-driven overshot rotor; and 100-series 500mm x 1.8m, 1000-series 650mm x 2m; seven-row helix, 1000-series nine-row helix; 20mm tines; powered intake roller optional 10-series, standard 100- and 1000-series.
Chopping: 43 double-sided blades; chop length 44mm; upper panel knife access.
Loading control: Pressure sensor on top flap; auto stop rear door sensor.
Floor: Inclined front section steel floor; four flat-link chains on welded steel rails; single-speed hydraulic drive.
Control: Schuitemaker joystick control box or any ISObus terminal.
Crop weighing: Optional load cell weighing system.
Running gear: 10, 100-series and 6600 S tandem axles, 7800 S + 8400 S triple axles; rigid mounting with hydraulic suspension option on 580 S, 660 S, 6600 S; passive or active steered rear axle.
Additional features: Standard and extended self-supporting body with no cross members for top loading.

Strautmann Zelon

Model	DIN volume	Typical volume	Price	Length	Height	Width	Weight
2501 CFS	23.0m ³	39.0m ³	£42,698	7,850mm	3,680mm	2,510mm	5,650kg
2901 CFS	27.0m ³	46.0m ³	£43,828	8,650mm	3,680mm	2,510mm	5,950kg
3301 CFS	31.0m ³	53.0m ³	£47,146	9,150mm	3,820mm	2,560mm	6,450kg



Pick-up: Chain-driven push configuration; 1.70m wide; five chevron tine rows; 55mm tine spacing; camless; roller crop guard.
Intake: Swath-spreading feed roller; gear-driven undershot rotor; 725mm x 1.45m; five-row helix.
Chopping: 32 double-sided knives; chop length 44mm; hydraulic knife bank drop-down.
Loading control: Automatic using top flap pressure sensors.
Floor: Level timber floor; four chains running in steel-lined channels; single- or two-speed hydraulic drive.
Control: Strautmann electro-hydraulic control box, Strautmann ISObus or any ISObus terminal.
Crop weighing: Not available.
Running gear: Tandem axles; parabolic suspension; optional passive steering rear axle; up to 710/40 R22.5 tyres.

Strautmann Super Vitesse

Model	DIN volume	Typical volume	Price	Length	Height	Width	Weight
3102 CFS	29.0m ³	51.0m ³	£58,012	8,800mm	3,950mm	2,550mm	6,900kg
3502 CFS	33.0m ³	58.0m ³	£60,053	9,600mm	3,950mm	2,550mm	7,100kg



Pick-up: Chain-driven push configuration; 1.8m wide; five chevron tine rows; 55mm tine spacing; camless; roller crop guard.
Intake: Swath-spreading feed roller; gear-driven undershot rotor; 800mm x 1.45m; six-row helix.
Chopping: 36 double-sided knives; chop length 39mm; hydraulic knife bank drop-down.
Loading control: Automatic using top flap pressure sensors.
Floor: Level timber floor; four chains running in steel-lined channels; two-speed hydraulic drive.
Control: Strautmann ISObus or any ISObus terminal.
Crop weighing: Not available.
Running gear: Tandem axles; passive steering rear axle, active steering optional; up to 620/40 R22.5 tyres.



A Whole New Bale Game

Tama Twine - Always Guaranteed Length



Tama UAT Ltd
Tel: +44 (0)1420 545 800
www.tama-uat.co.uk

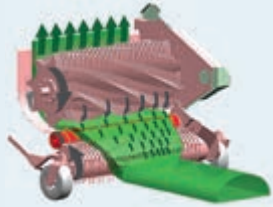


Find us on Facebook:
www.facebook.com/Tamafgs

Find us on Twitter:
<https://twitter.com/TamafGS>

Strautmann Mega Vitesse

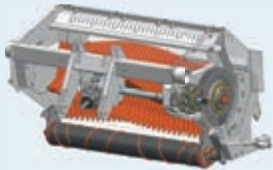
Model	DIN volume	Typical volume	Price	Length	Height	Width	Weight
3001 CFS	28.0m ³	51.0m ³	£62,826	8,490mm	3,990mm	2,550mm	8,300kg
3401 CFS	32.0m ³	58.0m ³	£64,766	9,290mm	3,990mm	2,550mm	8,800kg
3801 CFS	36.0m ³	65.0m ³	£67,371	10,090mm	3,990mm	2,550mm	9,200kg



Pick-up: Chain-driven push configuration; 2m wide; six chevron tine rows; 55mm tine spacing; camless; roller crop guard.
Intake: Swath-spreading feed roller; gear-driven undershot rotor; 840mm x 1.64m; eight-row helix.
Chopping: 40 double-sided knives; chop length 39mm; hydraulic knife bank drop-down.
Loading control: Automatic using top flap pressure sensors; tailgate switch triggers 'full' signals.
Floor: Level timber floor; four chains running in steel-lined channels; two-speed hydraulic drive from both sides.
Control: Strautmann ISObus or any ISObus terminal.
Crop weighing: Optional on the 3801 CFS.
Running gear: Tandem axles; parabolic suspension; passive steering rear axle, active steering and auto rear axle lock optional; up to 710/40 R22.5 tyres.

Strautmann Giga Vitesse

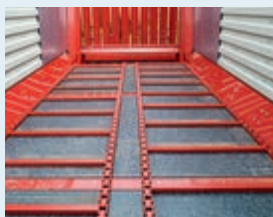
Model	DIN volume	Typical volume	Price	Length	Height	Width	Weight
3601 CFS	34.0m ³	65.0m ³	£69,190	9,420mm	4,000mm	2,550mm	9,000kg
4001 CFS	38.0m ³	72.0m ³	£71,262	10,220mm	4,000mm	2,550mm	9,400kg
4401 CFS	42.0m ³	80.0m ³	£79,153	11,020mm	4,000mm	2,550mm	9,900kg



Pick-up: Chain-driven push configuration; 2m wide; six chevron tine rows; 55mm tine spacing; camless; roller crop guard.
Intake: Swath-spreading feed roller; gear-driven undershot rotor; 840mm x 1.64m; eight-row helix.
Chopping: 45 double-sided knives; chop length 35mm; hydraulic knife bank drop-down.
Loading control: Automatic using top flap pressure sensors; tailgate switch triggers 'full' signal.
Floor: 3601 + 4001 – level timber floor; four chains running in steel-lined channels; optional galvanised steel floor with flat-link chains on steel rails – standard on 4401 CFS; two-speed hydraulic drive from both sides.
Control: Strautmann ISObus or any ISObus terminal.
Crop weighing: Optional on 4001 CFS and 4401 CFS.
Running gear: Tandem axles; parabolic suspension, hydraulic suspension optional 4001 + 4401; passive steering rear axle, active steering and auto rear axle lock optional; up to 710/50 R26.5 tyres.
Additional features: Self-supporting body without cross-members and hydraulic hinged front flap for top filling.

Strautmann Tera Vitesse

Model	DIN volume	Typical volume	Price	Length	Height	Width	Weight
4201 CFS	40.0m ³	76.0m ³	£82,432	10,110mm	4,000mm	2,550mm	10,400kg
4601 CFS	44.0m ³	84.0m ³	£87,900	10,860mm	4,000mm	2,550mm	11,000kg
5201 CFS	50.0m ³	95.0m ³	£108,254	12,000mm	4,000mm	2,550mm	13,000kg



Pick-up: Chain-driven push configuration; 2.12m wide; six chevron tine rows; 55mm tine spacing; camless; roller crop guard.
Intake: Swath-spreading feed roller; gear-driven undershot rotor; 840mm x 1.82m; eight-row helix.
Chopping: 50 double-sided knives; chop length 35mm; hydraulic knife bank drop-down.
Loading control: Automatic using hydraulic folding top flap pressure sensors; tailgate switch triggers 'full' signal.
Floor: Level plastic floor; four flat-link chains; twin centre-mounted two-speed hydraulic drive motors.
Control: Strautmann ISObus or any ISObus terminal.
Crop weighing: Optional.
Running gear: 4201 – tandem axles; parabolic suspension, hydraulic suspension optional; 4601 – tandem axles, triple hydraulic suspension axles optional; 5201 – triple hydraulic suspension axles; passive rear axle steering, active steering and auto rear axle lock optional; up to 710/50 R26.5 tyres.
Additional features: Self-supporting body without cross-members and hydraulic hinged front flap for top filling; optional cargo cover.



Trelleborg. Five hundred kilograms of lightness.

Strong and light at the same time? That's why we've created the TM1000 High Power tyre. It provides an extra-wide footprint, reducing ground pressure, protecting soil from compaction and ensuring high crop yields. Moreover, its reduced rolling resistance results in low fuel consumption and emissions, helping you to produce more in a sustainable way.
www.trelleborg.com/wheels



Mowers

Tedders

Rakes

Forage harvester

NEW

The affordable route to high quality forage.



0% Finance
 1 + 3 Annual Payments

PÖTTINGER **LOADER WAGONS**

- Over 50 years of manufacturing experience
- Unrivalled load efficiency and output for low operating costs
- Consistent chop lengths for rumen stimulating forage
- For tractors from 90 to 450 hp with a model to suit all applications.



PÖTTINGER Finance available to business users only. Subject to terms and conditions. Details upon request
 Alois PÖTTINGER UK Ltd, T: 01536 272220,
info.uk@pottingeruk.co.uk, www.pottingeruk.co.uk

Authorised and regulated by the Financial Conduct Authority only in respect of agreements regulated by the Consumer Credit Act 1974.

